

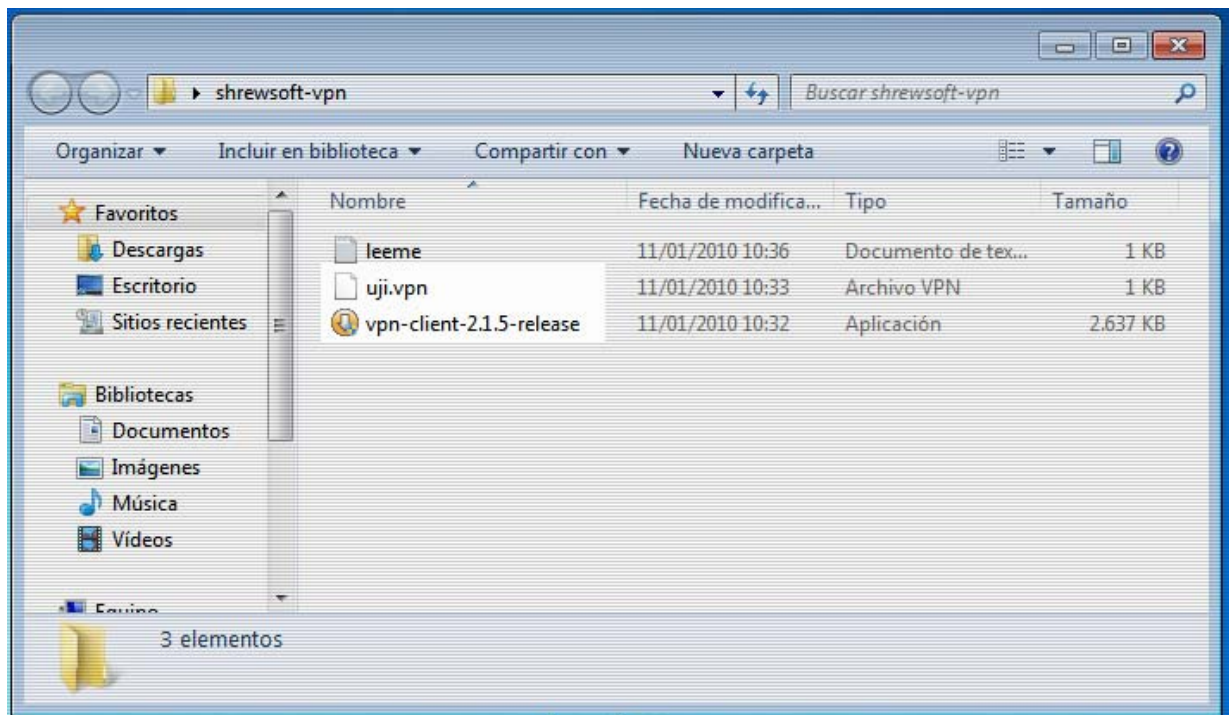
INSTALLATION GUIDE: here are the steps to follow to use the Shrew Soft VPN client to connect through the VPN server at the **Universitat Jaume I**. This client is recommended for 64-bit operating systems, but it's also usefull for those who have problems with the Cisco Systems VPN Client. to here are hrew **Soft VPN client** to connect through the VPN server at the Universitat Jaume I. This client is recommended for 64-bit operating systems, but it's also usefull for those who have problems with the **Cisco Systems VPN Client**.

STEP 0.- DOWNLOAD THE FILE

If you're reading this, probably you already did. If it's not the case, you should download it from the following URL

- <http://webforum.uji.es/download/file.php?id=802>

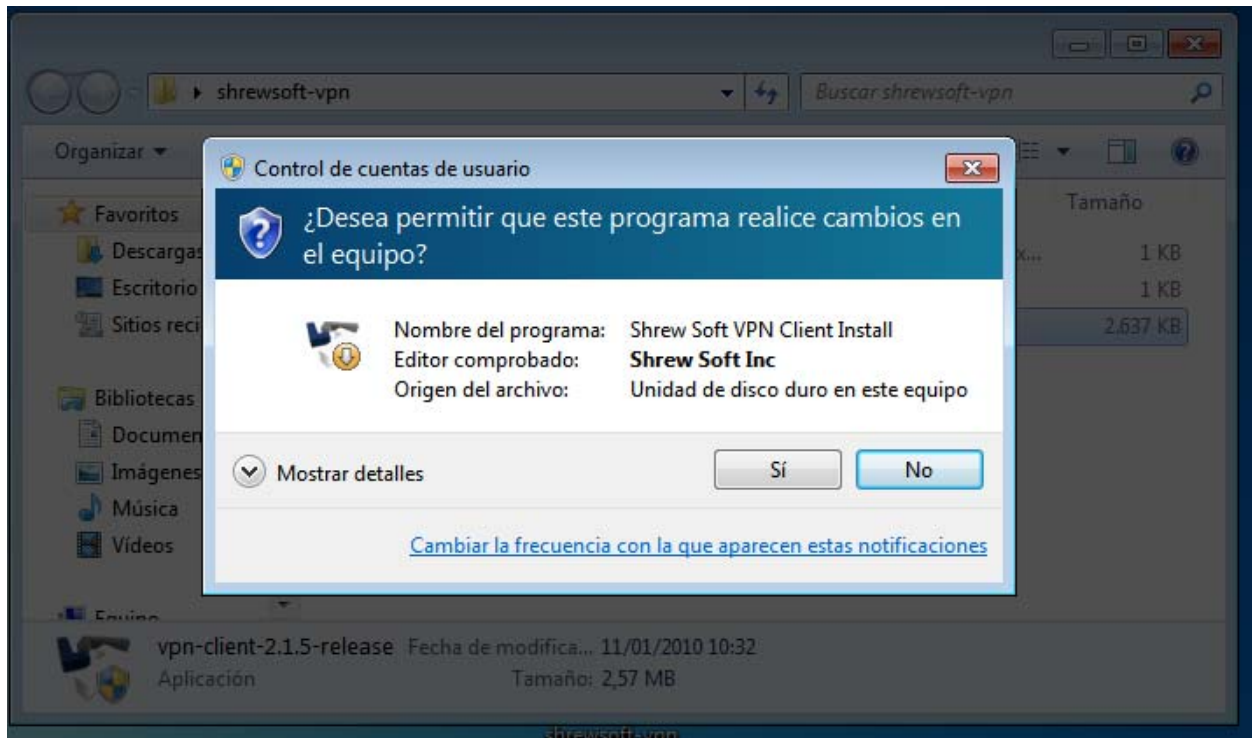
STEP 1.- EXTRACT THE ZIP FILE CONTENT



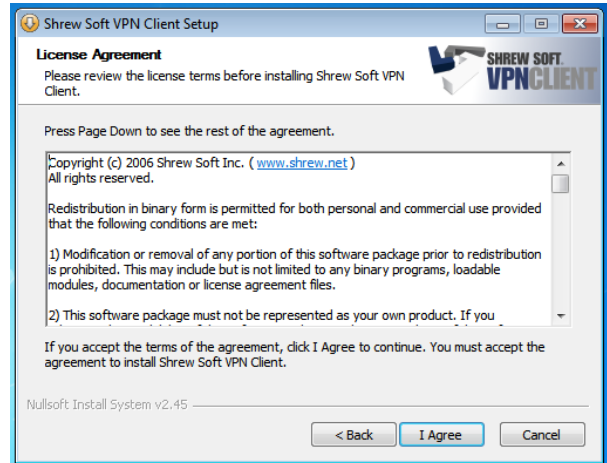
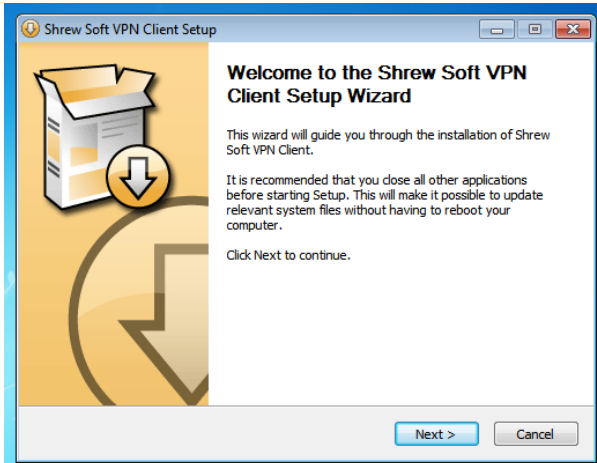
The two files highlighted in the image are needed. We have the installer, **vpn-client-2.1.x.-release**, and the configuration file, **uji.vpn**. Later, it will be the needed to connect to the University VPN server.

STEP 2.- INSTALL THE SOFTWARE

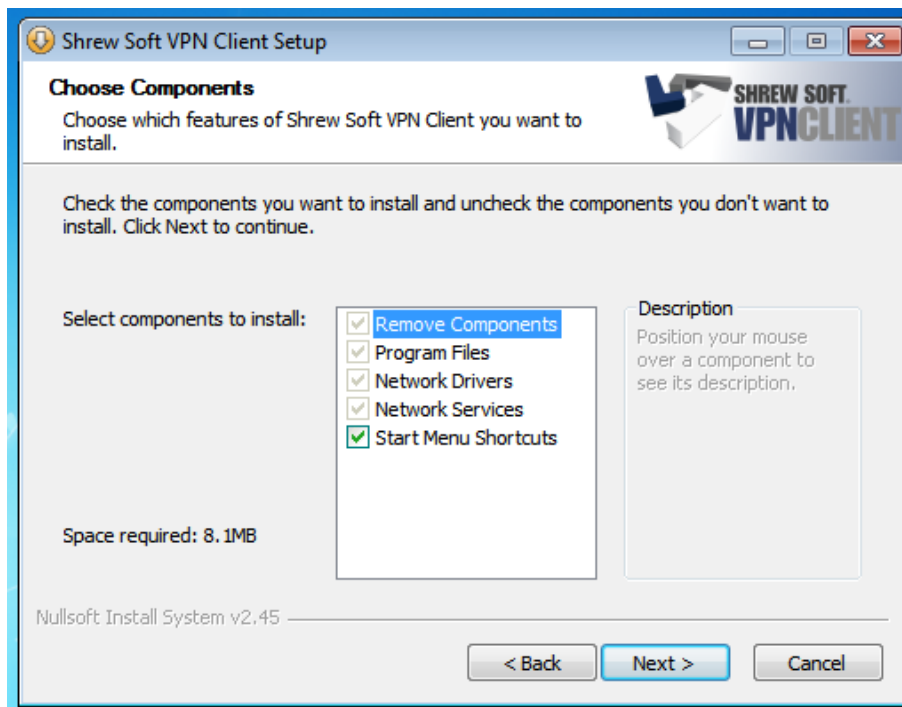
Click over the installer to start. It may show something like that...



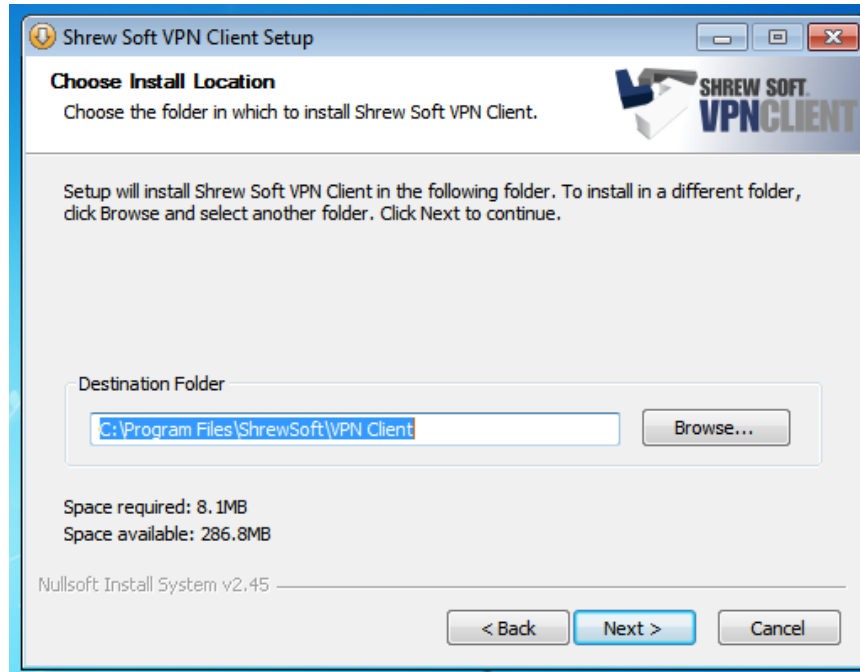
Click over "Yes" to go on. Here follows some snapshots of the process.



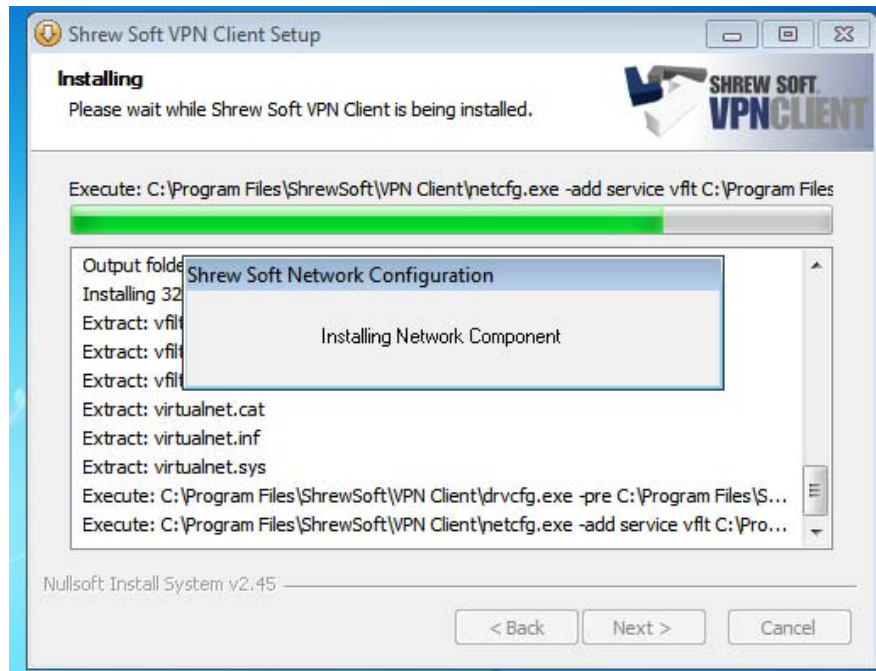
Click over "**Next >**". Click over "**I Agree**".



Click over "**Next >**",



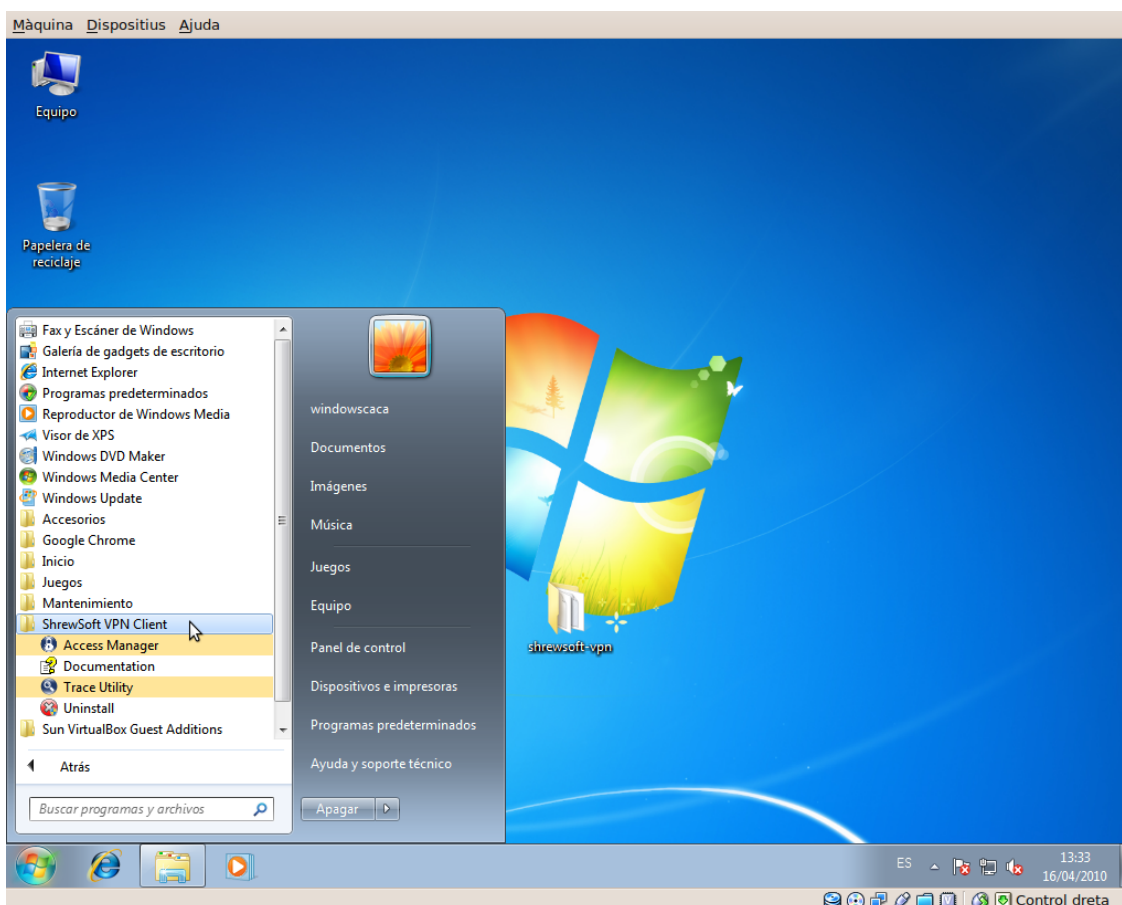
If you wish to change the location of the program select the new destination by clicking on "**Browse ...**", otherwise click over "**Next >**".



Now it will install. It is possible that during the process the system asks you for permission to continue, if so allow it.

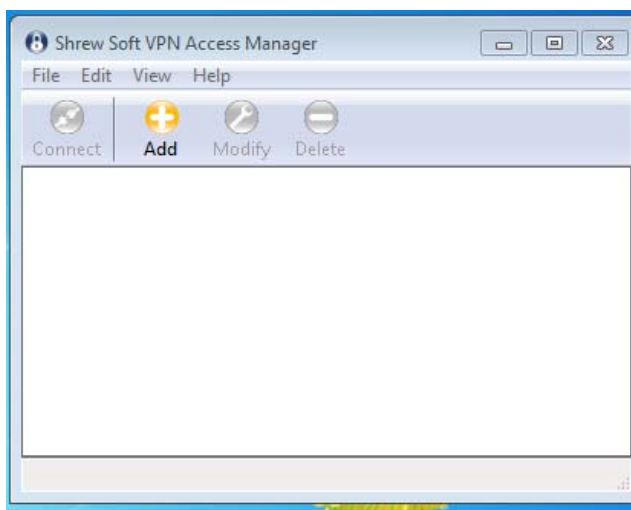
Click over "**Finish**" and proceed to the last step.

STEP 3.- LAUNCH AND SETUP THE SOFTWARE

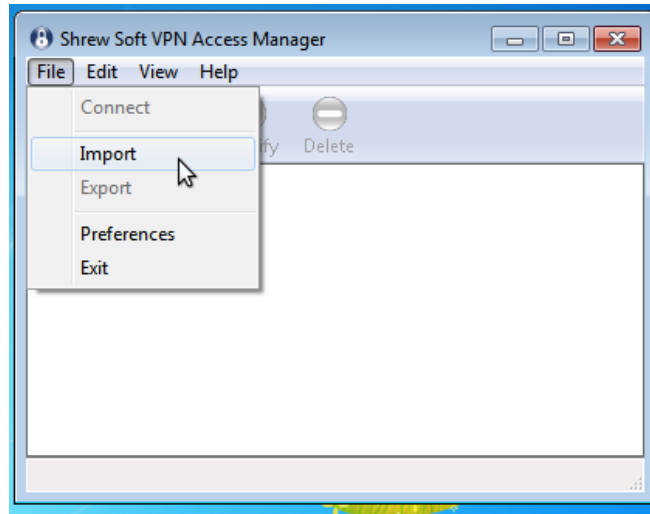


You may find the software on "ShrewSoft VPN Client" named as "Access Manager".

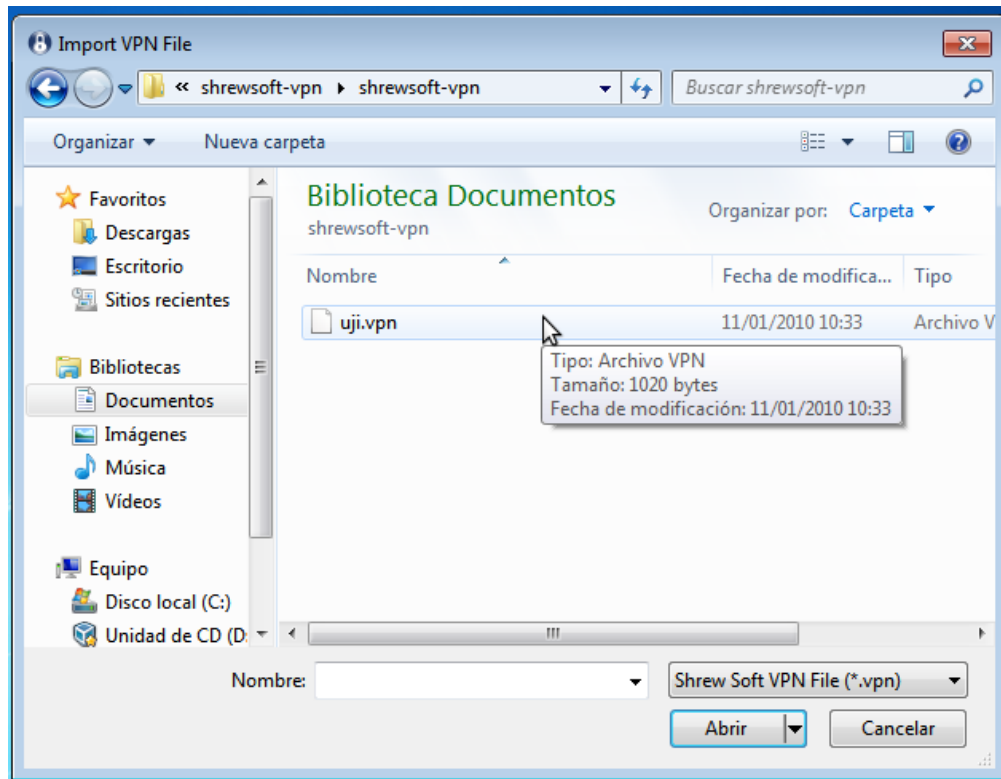
Click over it to launch it. A screen like the following will show up.



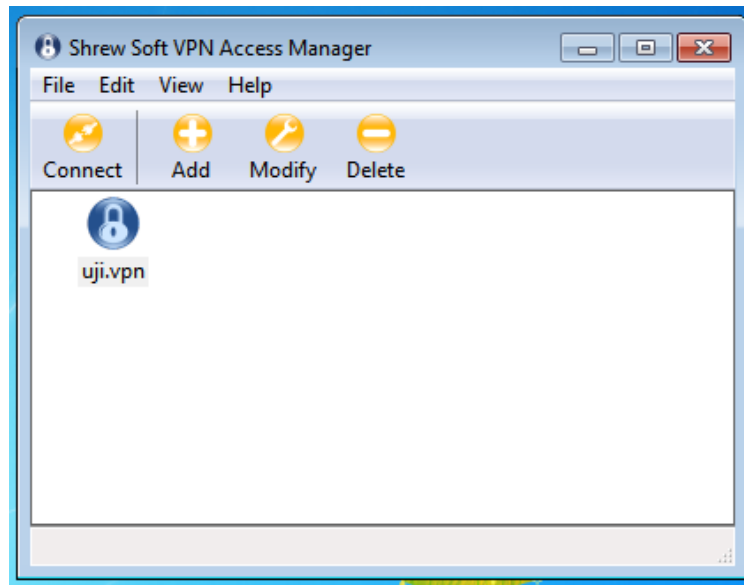
You have to import the **uji.vpn** file. (Remember Step 1)



From "File" menu, select "Import".

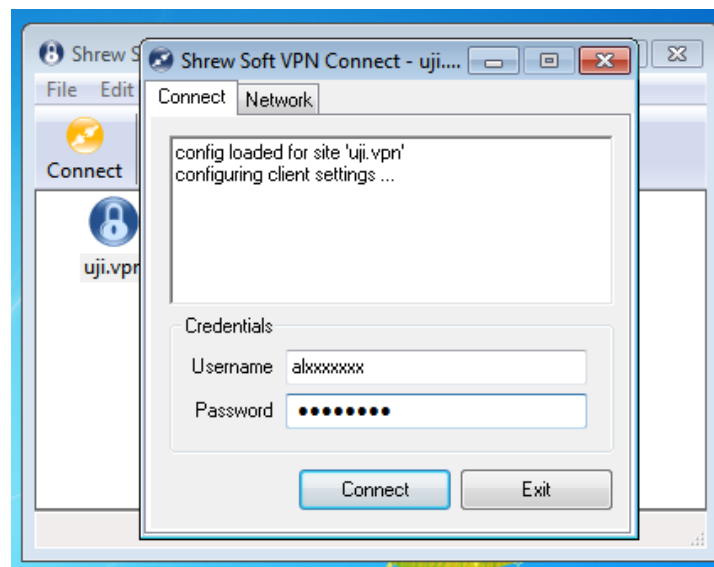


Locate and select the file on your computer.

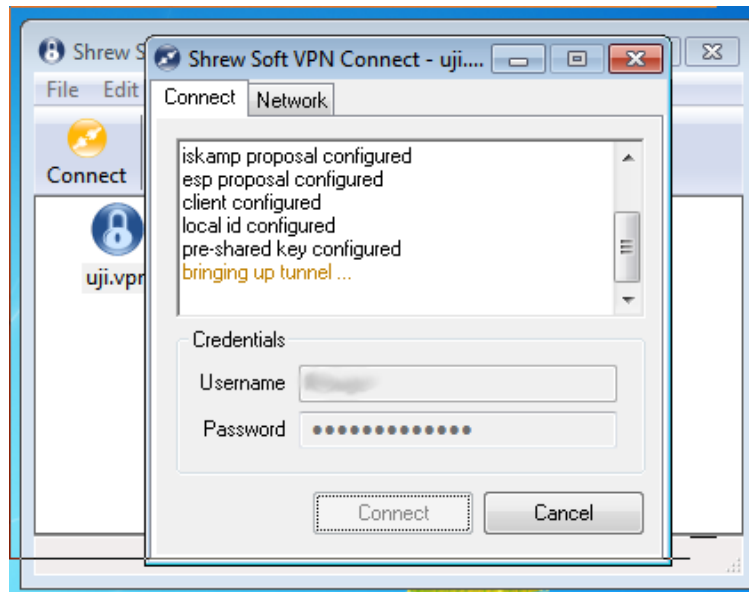


Now you are ready to connect. Select "**uji.vpn**" y click over "**Connect**" or just doble click over "uji.vpn".

Be sure you are connected properly to the UJI access point before proceeding.



Enter your password.



When the message "**tunnel enabled**" shows up the connection succeeded. It is recommended to minimize the window to work comfortably.